

MAKE A STATEMENT GO PAPERLESS

Every year, **400 million tons** of pulp and paper are produced globally. The U.S., China, Japan and Canada are the world's largest producers, making up more than half of the total paper production.

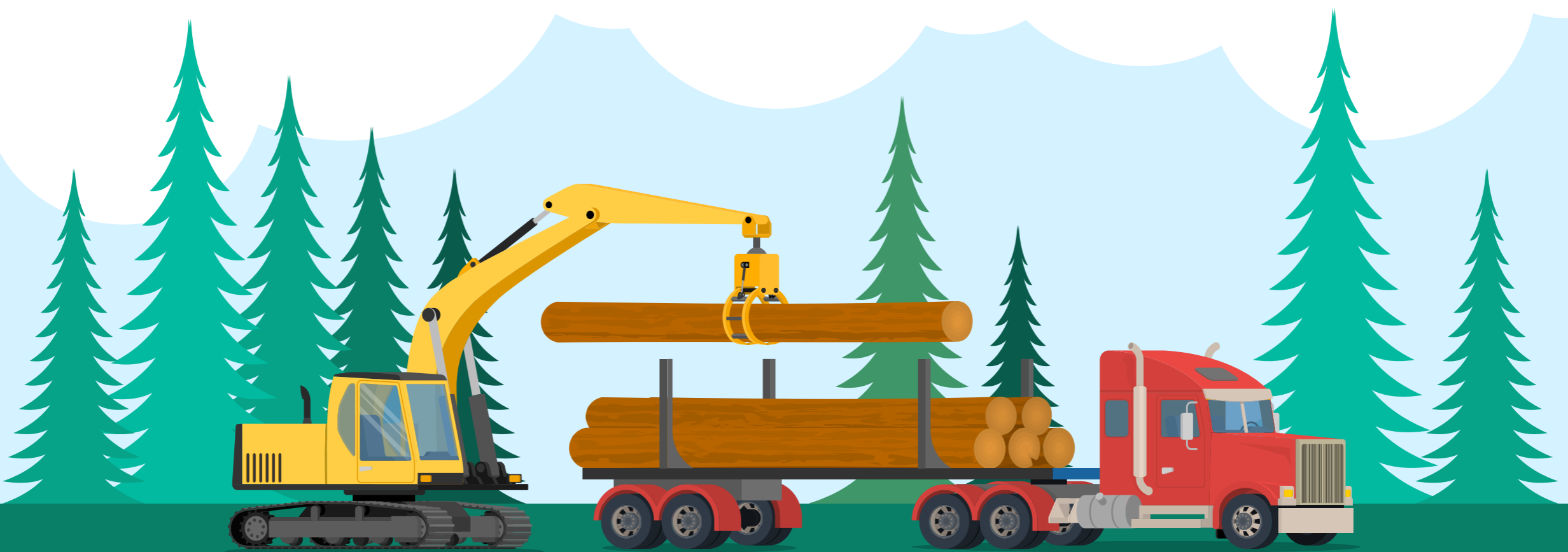
The production of pulp and paper has a negative impact on climate change, due to greenhouse emissions, and on water, due to chemical runoffs.

On average, Livingston uses **26,753** sheets of paper per day on invoices. That's **813,300** per month.

A total of:

9,759,600

sheets of paper used on invoicing per year.



When making paper, it's possible to obtain approximately **17 reams from one tree**. One ream has about 500 sheets of paper, so **one tree equals 8,500 sheets of paper**. It takes **24 trees to make one ton** of uncoated non-recycled printing and office paper.

Livingston invoices use up the equivalent of



48

TONS OF PAPER



178

TONS OF WOOD



267,739

POUNDS (CO2 EQUIVALENT)
OF GREENHOUSE GASSES



91,862

TONS OF
SOLID WASTE

MAKE A STATEMENT.
HELP THE ENVIRONMENT.
GO PAPERLESS.

To find out how you can receive your Livingston invoices electronically, visit www.livingstonintl.com/gopaperless.

Sources

http://www.panda.org/about_our_earth/deforestation/forest_sector_transformation/pulp_and_paper

<http://www.businessinsider.com/how-much-paper-would-it-take-to-print-the-internet-2015-4>

http://www.bizjournals.com/buffalo/blog/morning_roundup/2014/05/pulp-fiction-how-many-trees-does-it-take-to-make.html

LIVINGSTON
Simplify Trade